

WIVE

CRAIGIE



## ABOUT YARAN



### **Yaran**

Email: [ndis@yaran.com.au](mailto:ndis@yaran.com.au)

Phone: 0452 667 944

[yaranndis.com.au](http://yaranndis.com.au)

Yaran NDIS is part of Yaran Property Group.

Since 1996, our mission is to be a blessing to others through housing that is affordable, fit-for-purpose, and environmentally conscious.

Though we specialize in affordable build-to-rent, we have extended our scope to address the housing needs of those living with disabilities, ensuring they can live comfortably and independently.

Yaran has dedicated property management, strata management, and short-stay accommodation management teams to look after all aspects of the tenancy.






## VIVE CRAIGIE HOMES



Situated in Craigie, a well-established coastal suburb in Perth's northern corridor, this boutique SDA complex consists of 3 purpose-built houses, each thoughtfully designed to support independence, safety and comfort for residents with high physical needs.

Each home features 4 bedrooms and 3 bathrooms, designed to accommodate 3 residents, ensuring generous space and privacy within a supportive shared living environment.

**Our residences are available for NDIS Participants under the following SDA Categories:**

-  High Physical Support
-  Fully Accessible
-  Improved Liveability

# WELCOME TO VIVE CRAIGIE HOMES



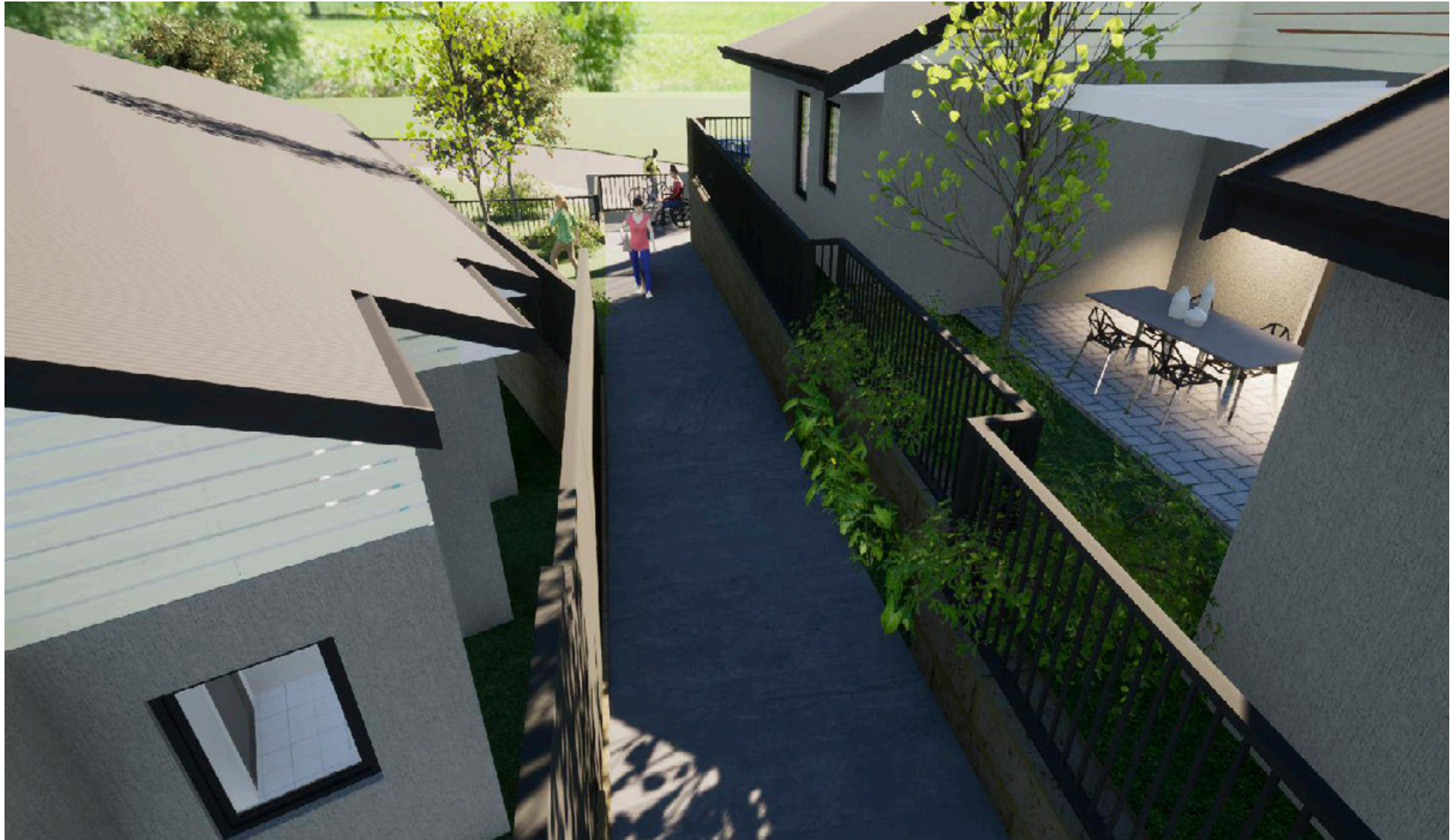
# LEAFY STREETSCAPE



## PRIVATE PATHWAYS



## PEDESTRIAN ACCESS



## REAR ROADWAY



CONTEMPORARY HOMES



## VIVE CRAIGIE HOMES





# LIVEABILITY FEATURES



## ACCESS TO COMMON AREAS

- Level entrance for easy access
- Flat access to outdoor areas accessible by wheelchair
- Safe, step-free pathway from street/parking to entrance
- Smooth internal doors and corridors for comfortable movement



## ASSISTIVE TECHNOLOGY

- Provision for ceiling hoists
- Height-adjustable benchtops
- Provision for automated doors and blinds to windows
- Intercom system with central connection to all in-house automations



## PROPERTY FEATURES

- Pets Allowed
- Wide Doorways
- Private Courtyards
- Allocated Storerooms
- Bathroom vanity/hand basin accessible in seated or standing position



## AMENITIES/ NEARBY FACILITIES

- Located in Craigie, approximately 25 km north of Perth CBD
- Close to local shopping centres, medical facilities, parks, and coastal reserves
- Easy access to public transport connecting to Joondalup and surrounding suburbs
- Proximity to beaches, community centres, and recreational facilities



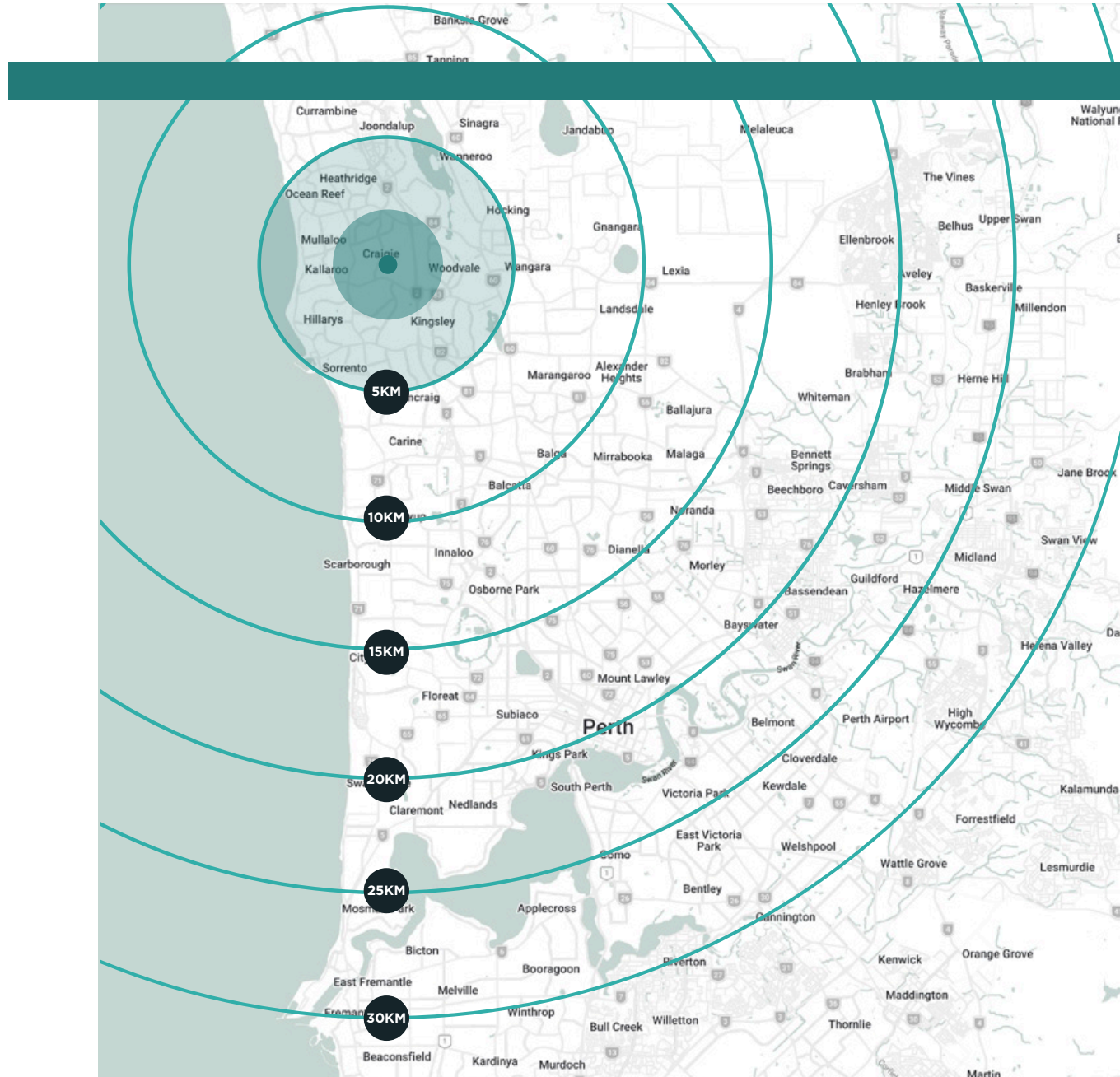
Our mission is to provide housing which is affordable, fit-for-purpose and environmentally conscious.



# LOCATION - LOCALE

The residences are situated in the desirable leafy area of Craigie.

- 200m Otago Park
- 550m Craigie Plaza
- 2.3km Midland Train Station
- 2.5km Coast
- 5km Joondalup Shopping Centre
- 20km Perth City
- 30km Fremantle





JOONDALUP SHOPPING CENTRE

ECU JOONDALUP

SHOPS, COMMERCIAL DISTRICT

LAKE JOONDALUP

EDGEWATER TRAIN STATION

SHOPS, COMMERCIAL DISTRICT

CRAIGIE PLAZA

OTAGO PARK

CRAIGIE OPEN SPACE

WHITFORDS CATHOLIC PRIMARY SCHOOL

MARMION AVENUE

VIVE  
CRAIGIE

CRAIGIE HEIGHTS PRIMARY SCHOOL



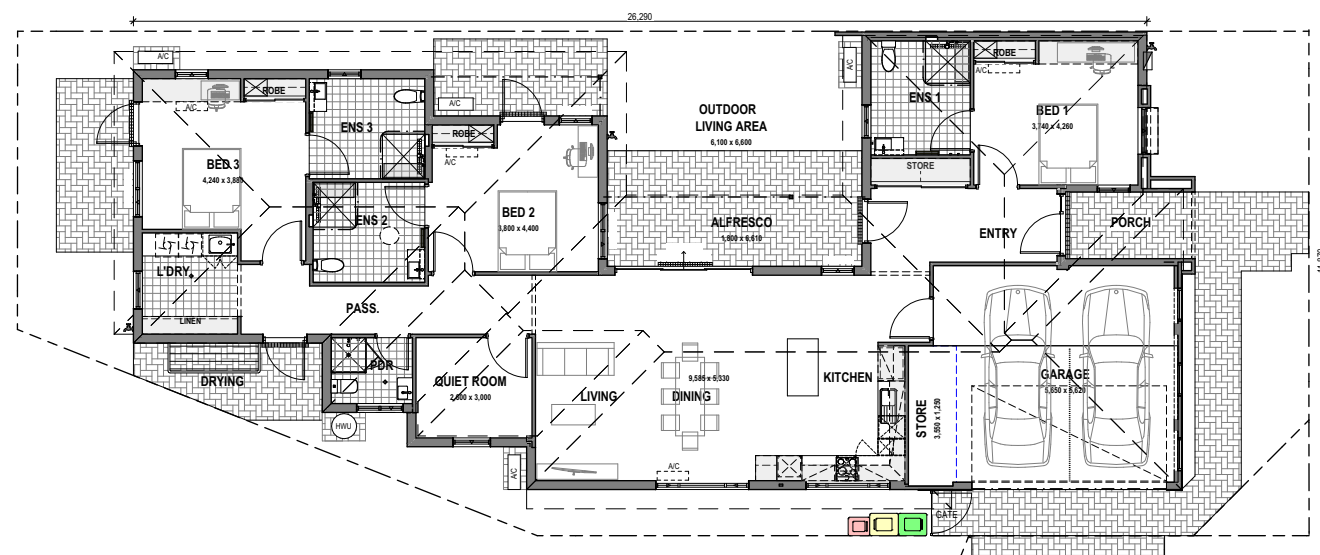
# FLOOR PLANS

## Features

- Intercom system
- Slip-resistant flooring
- Accessible bathroom and shower
- Ensuite bathroom for each bedroom
- Onsite overnight assistance available
- Reinforced ceilings with hoist provision
- Air conditioning in living areas and master bedroom
- Flat access to outdoor areas accessible by wheelchair
- Power supply provision for automated doors and window (blinds)

## SDA Type A

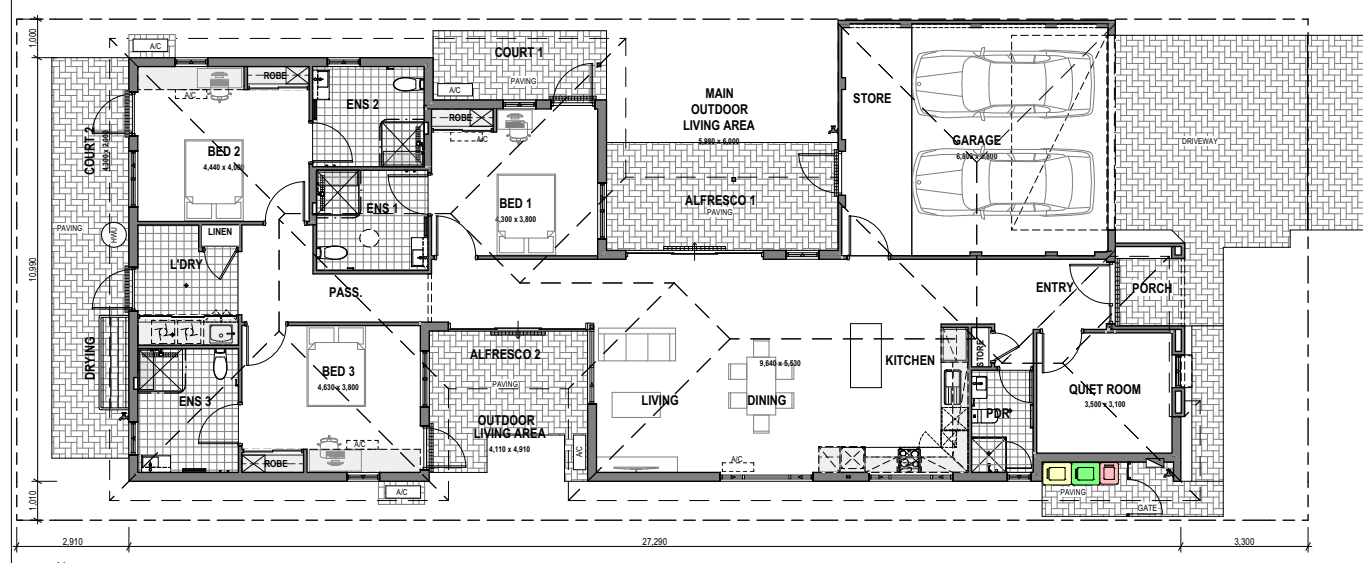
4  4   256 sqm



# FLOOR PLANS

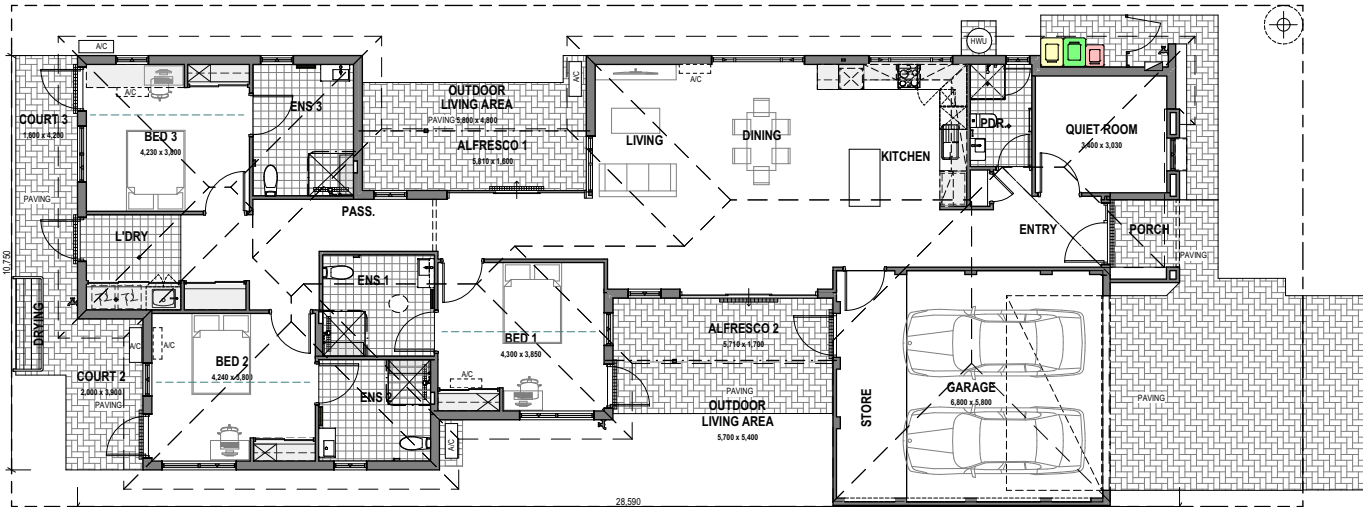
## SDA Type B

4  4   270 sqm



## SDA Type C

4  4   264 sqm



## YARAN'S POINT OF DIFFERENCE

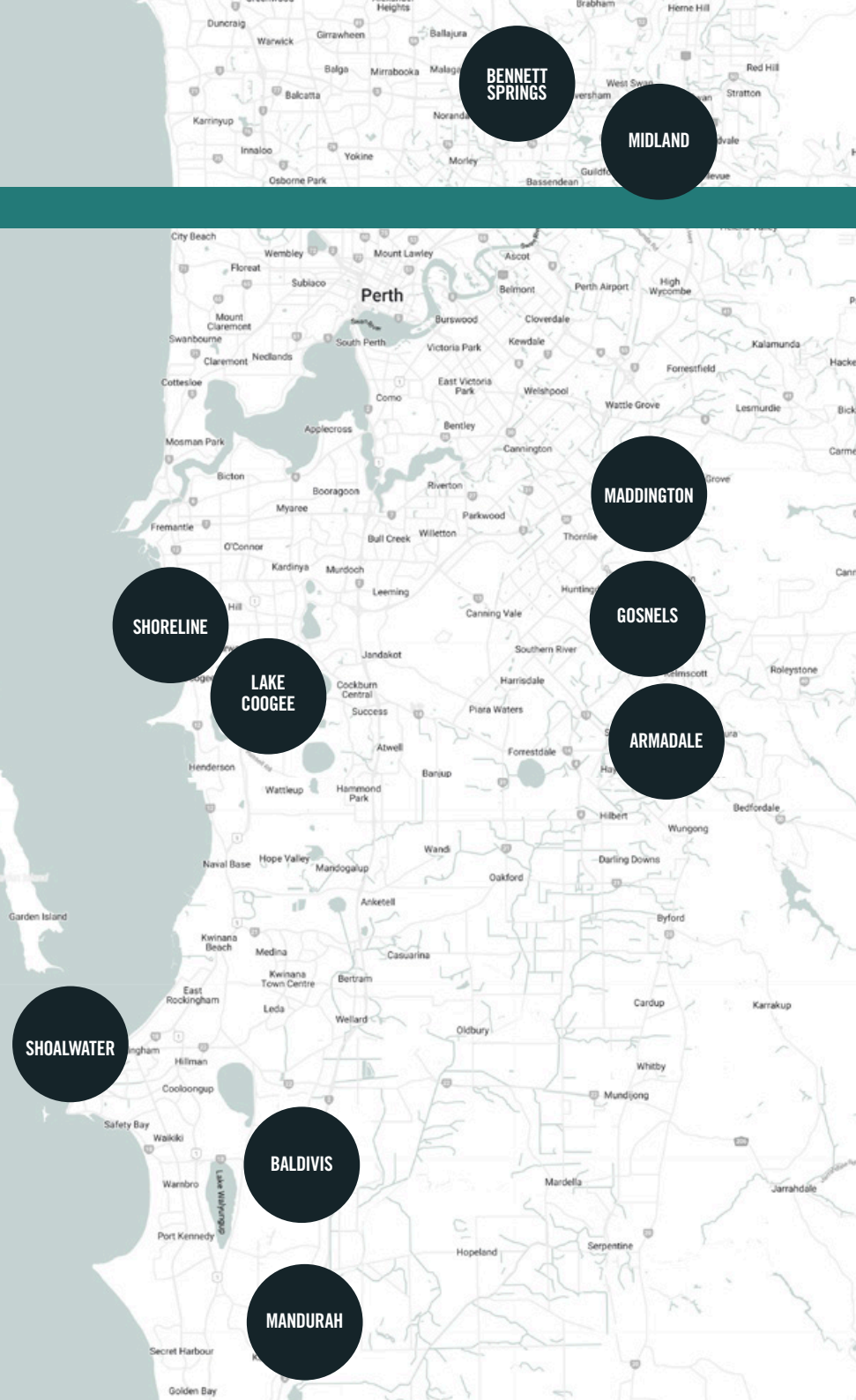
- Single-Occupancy dwellings with additional bedroom and bathroom for family members, guests, and support workers
- Quality-built SDA homes that meet High Physical Support Design Standards
- Accepting NDIS participants with High Physical Support, Fully Accessible and Improved Liveability funding
- Additional residence within complex used exclusively as Onsite Overnight Assistance (OOA)
- Private courtyards
- Accepting participants with pets
- Tailored housing solutions to suit individual needs and preferences
- A seamless and stress-free process from expression of interest to moving into your home
- Ongoing customer support and maintenance services

### **Pipeline of SDAs**

We currently have 280 SDAs under construction across 33 different sites in Perth's South Metro Area.

## SDA SITE LOCATIONS

Suburb	Status/Availability	SDAs	Non-SDAs	Total Dwellings
North Coogee (Shoreline)	Available	15	5	20
Baldivis	Available	8	1	9
Lake Coogee	Available	8	1	9
Shoalwater	Available	7	1	8
Mandurah	Available	42	9	51
Gosnells	Available	43	7	50
Midland	Available	44	11	55
Maddington	Available	23	3	26
Armadale	Available	14	2	16
Bennett Springs	Available	14	2	16
TOTALS		218	42	260



## YARAN NDIS TEAM

We believe the more minds we put toward a task allows us to analyze solutions from different view points. Together our multidisciplinary team explores solutions to come up with a custom, innovative and beautiful housing solutions for NDIS.



**Faryar Gorjy**

Director and  
Founder of  
Yaran Property Group



**Caio De Araujo**

Business Development  
Manager for  
Yaran NDIS



**Ruby Echavez**

Operations Manager  
for Yaran NDIS



**Vesna Pravica**

Customer Engagement  
Manager for  
Yaran NDIS



**Marisa Lopez**

Assistant Business  
Development Manager  
for Yaran NDIS

**YARAN**

Suite 2, Level 3, South Shore Centre,  
85 South Perth Esplanade, South Perth WA, 6151

T: 0452 667 944

E: [ndis@yaran.com.au](mailto:ndis@yaran.com.au)

[yaranndis.com.au](http://yaranndis.com.au)

